

In-Cab Incident Alerts for Professional Truck Drivers


**John McKown, America's Road Team Captain
Tforce Freight**

**Rebecca M. Brewster, President and COO
American Transportation Research Institute**

2021 Top Industry Issues

1. Driver Shortage (1)
2. Driver Retention (6)
3. Driver Compensation (2)
4. Lawsuit Abuse Reform (7)
5. Truck Parking (3)
6. Compliance, Safety, Accountability (4)
7. Detention / Delay at Customer Facilities (9)
8. Transportation Infrastructure / Congestion / Funding (#9 in 2019)
9. Insurance Cost / Availability (5)
10. Diesel Technician Shortage

CRITICAL ISSUES IN THE TRUCKING INDUSTRY – 2021



Presented to the
American Trucking Associations

Prepared by
The American Transportation Research Institute
October 2021

ATRI American
Transportation
Research
Institute

950 North Glebe Road
Arlington, VA 22203
(703)838-1966
ATRI@trucking.org
TruckingResearch.org

2021 Top Industry Issues

Rank	Commercial Drivers		Motor Carriers
1	Driver Compensation (tie)	Truck Parking (tie)	Driver Shortage
2	Detention / Delay at Customer Facilities		Driver Retention
3	Fuel Prices		Lawsuit Abuse Reform
4	Driver Training Standards		CSA
5	Hours-of-Service Rules		Driver Compensation
6	ELD Mandate		Insurance Cost / Availability
7	Driver Distraction		Diesel Technician Shortage
8	Transportation Infrastructure / Congestion / Funding		Transportation Infrastructure / Congestion / Funding
9	Speed Limiters		Driver Distraction
10	CSA		Detention / Delay at Customer Facilities

Operational Costs of Trucking

- Collects and analyzes real-world motor carrier operational data
- Covers data 2008-2020
- Calculates costs by mile and by hour
- Includes sector, regional analyses
 - ◆ TL, LTL, Specialized/Other
 - ◆ Small vs Large Fleets



Operational Costs of Trucking

Average Carrier Costs per Hour

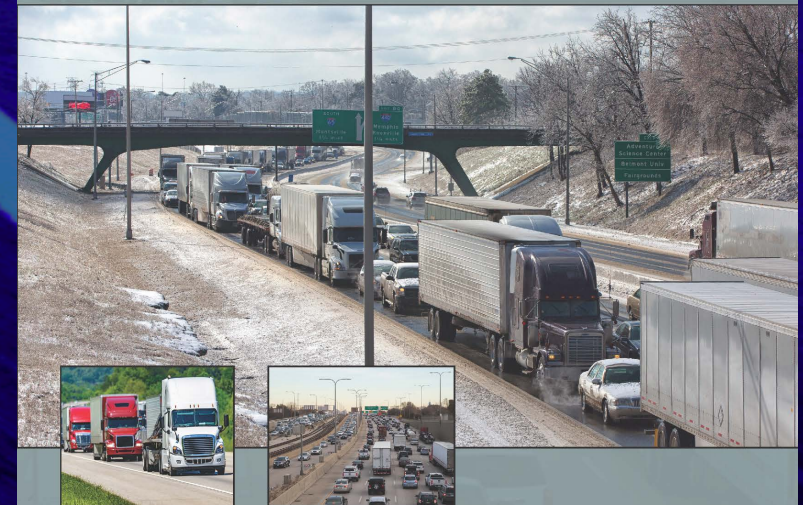
Motor Carrier Costs	2016	2017	2018	2019	2020
Vehicle-based					
Fuel Costs	\$13.45	\$14.50	\$17.07	\$15.14	\$12.52
Truck/Trailer Lease or Purchase Payments	\$10.20	\$10.39	\$10.45	\$10.09	\$11.00
Repair & Maintenance	\$6.65	\$6.58	\$6.72	\$5.87	\$6.00
Truck Insurance Premiums	\$3.00	\$2.95	\$3.32	\$2.80	\$3.55
Permits and Licenses	\$0.88	\$0.92	\$0.95	\$0.79	\$0.67
Tires	\$1.41	\$1.50	\$1.50	\$1.54	\$1.73
Tolls	\$0.97	\$1.05	\$1.17	\$1.38	\$1.49
Driver-based					
Driver Wages	\$20.91	\$21.97	\$23.50	\$21.84	\$22.97
Driver Benefits	\$6.18	\$6.78	\$7.10	\$7.49	6.94
TOTAL	\$63.66	\$66.65	\$71.78	\$66.94	\$66.87

Cost of Congestion

- Congestion on U.S. NHS cost trucking industry \$74.5B in 2016
- Lost productivity = 1.2 billion hours
 - ◆ Equates to 425,533 commercial drivers sitting idle for entire year
- Congestion added \$15.74B to industry's fuel bill
- Additional fuel consumption resulted in 67.3 million metric tons of excess carbon dioxide (CO₂) emissions

Cost of Congestion to the Trucking Industry: 2018 Update

October 2018



Prepared by the American Transportation Research Institute



2021 Top Truck Bottlenecks

2021 TOP TRUCK BOTTLENECKS • BY THE NUMBERS

AVERAGE PEAK
HOUR TRUCK
SPEED:

43.0
mph



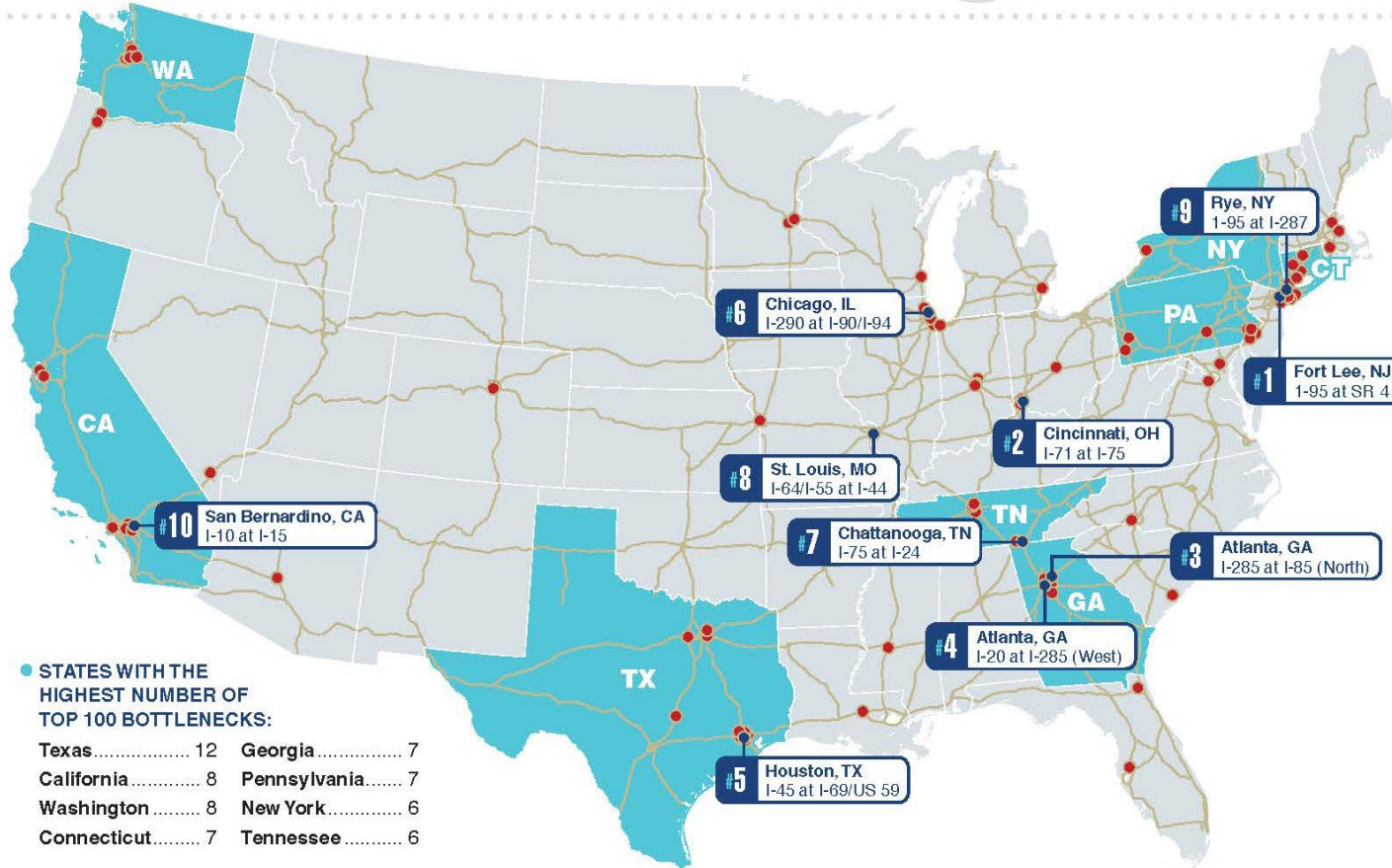
33.9%
year-over-year

TOP 100 BOTTLENECKS
WITH AVERAGE TRUCK
SPEEDS <45 MPH:

25%

NUMBER OF STATES
WITH AT LEAST ONE
TOP 100 BOTTLENECK:

29



2021 Top 10 Truck Bottlenecks

Rank	Location	Average Peak Speed	Y-o-Y Change in Average Peak Speed
1	Fort Lee, NJ: I-95 at SR 4	31.3	39.4%
2	Cincinnati, OH: I-71 at I-75	40.1	11.5%
3	Atlanta, GA: I-285 at I-85 (North)	34.4	53.5%
4	Atlanta, GA: I-20 at I-285 (West)	40.9	12.6%
5	Houston, TX: I-45 at I-69/US 59	31.4	53.7%
6	Chicago, IL: I-290 at I-90/I-94	25.4	57.6%
7	Chattanooga, TN: I-75 at I-24	46.8	-1.8%
8	St. Louis, MO: I-64/I-55 at I-44	46.1	10.1%
9	Rye, NY: I-95 at I-287	45.7	12.0%
10	San Bernardino, CA: I-10 at I-15	40.7	25.1%

Questions?

Rebecca Brewster

rbrewster@trucking.org

770-432-0628

www.TruckingResearch.org



@Truck_Research

@ATRIPREZ